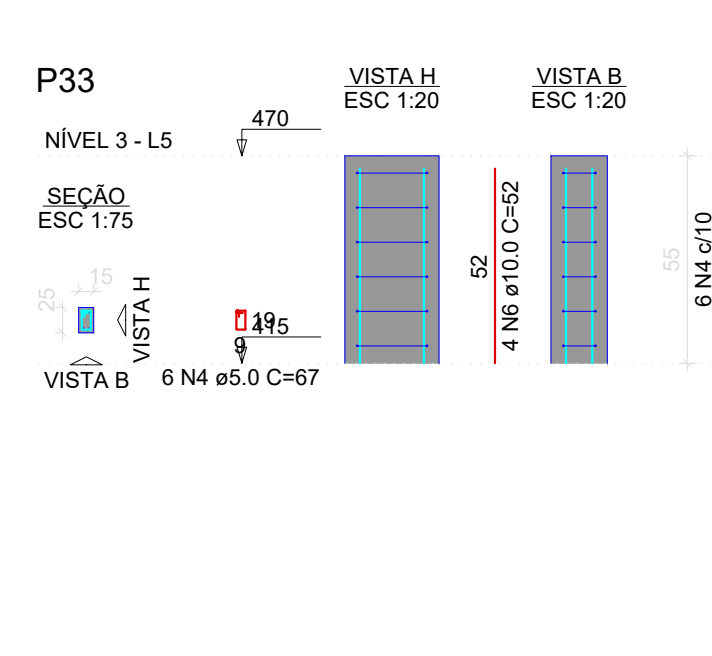


RESUMO DO AÇO		
DIAM (mm)	C.TOTAL (m)	PESO + 0% (kg)
6.3	142	34.8
8.0	77.8	30.7
5.0	218.4	33.7
TOTAL (m)		
65.5		
33.7		

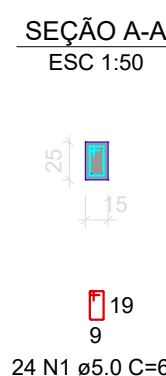
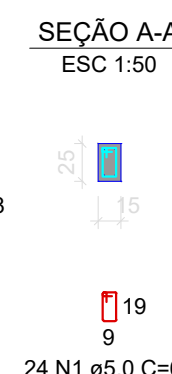
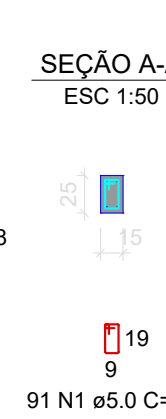
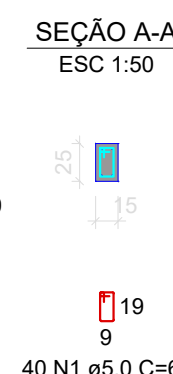
concreto (C-25) = 1.92 m³  
 ma = 33.75 m²

Volume de concreto (C-25) = 1.92 m<sup>3</sup>  
Área de forma = 33.75 m<sup>2</sup>



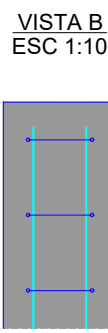
RESUMO DO AÇO			
AÇO	DIAM (mm)	C.TOTAL (m)	PESO + 0% (kg)
CA50	6.3	8.2	2
	10.0	63.6	39.2
CA60	5.0	93.7	14.4
PESO TOTAL (kg)			
CA50	41.2		
CA60	14.4		

Volume de concreto (C-25) = 0.53 m<sup>3</sup>  
Área de forma = 10.84 m<sup>2</sup>



RESUMO DO AÇO			
AÇO	DIAM (mm)	C.TOTAL (m)	PESO + 0% (kg)
CA50	6.3	101.2	24.8
CA60	5.0	119.9	18.5
PESO TOTAL (kg)			
CA50	24.8		
CA60	18.5		

Volume de concreto (C-25) = 0.82 m<sup>3</sup>  
Área de forma = 15.80 m<sup>2</sup>



RESUMO DO AÇO			
AÇO	DIAM (mm)	C.TOTAL (m)	PESO + 0% (kg)
CA50	10.0	9.7	6
CA60	5.0	18.1	2.8
PESO TOTAL (kg)			
CA50	6		
CA60	2.8		

Volume de concreto (C-25) = 0.10 m<sup>3</sup>  
Área de forma = 2.16 m<sup>2</sup>

00 13/13